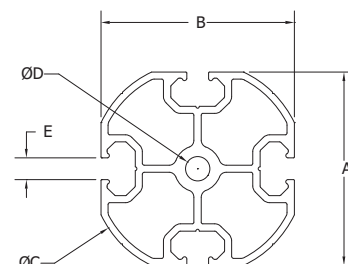


L, X, D, JX & HX Profile... Aluminum Profiles

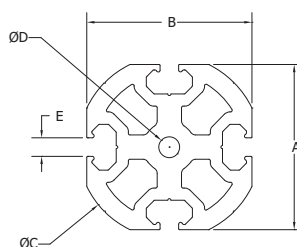
L, X, D, JX & HX... Aluminiumprofile
L, X, D, JX & HX... アルミフレーム



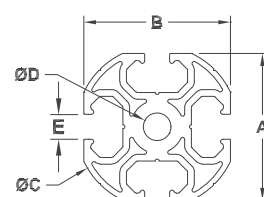
Example of Use



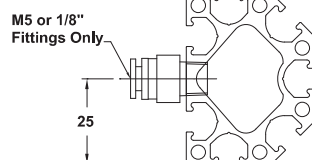
HX-60



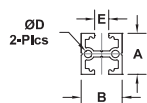
HX-60 HD



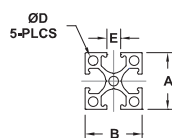
HX-40



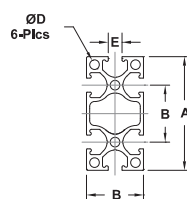
L-18/10



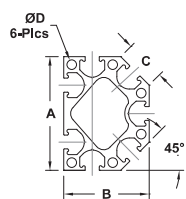
L-18/18



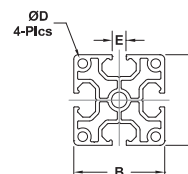
X-25/25



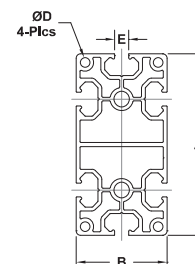
X-50/25



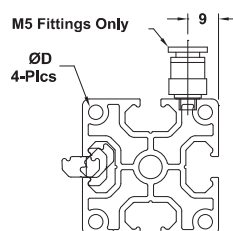
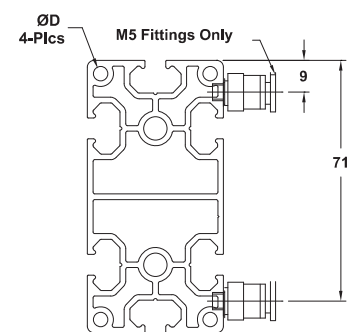
D-50/38



JX-40/40



JX-80/40



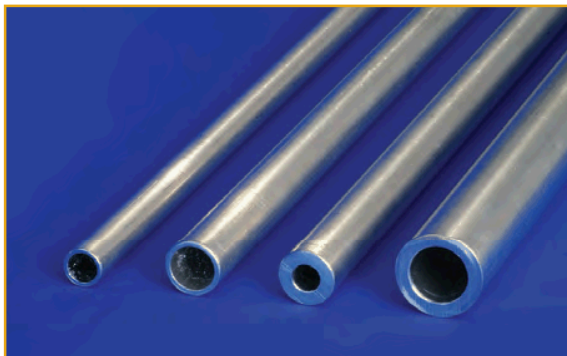
- Use with GWP Channel Nuts and PL-X Channel Nut profile

	A	B	C	D	E	Length	Channel Nut	Weight (g)	Price
L-18/10	10	18	~	~	6.1	2000	PL-X	480	\$11.60
L-18/18	18	18	~	4.2	6.1	2000	PL-X	700	\$18.20
X-25/25	25	25	~	4.2	6.1	2000	PL-X	1207	\$17.00
X-50/25	50	25	~	4.2	6.1	2000	PL-X	2060	\$30.00
D-50/38	50	38	17.7	4.2	6.1	2000	PL-X	2792	\$45.00
JX-40/40	40	40	~	4.2	6.1	2000	PL-X	2959	\$31.00
JX-80/40	80	40	~	4.2	6.1	2000	PL-X	4710	\$50.00
HX-40	36	36	40	6.8	6.1	2000	PL-X	2395	\$35.78
HX-60	54	54	60	6.8	6.1	2000	PL-X	3685	\$54.34
HX-60 HD	54	54	60	6.8	6.1	2000	PL-X	7780	\$67.50

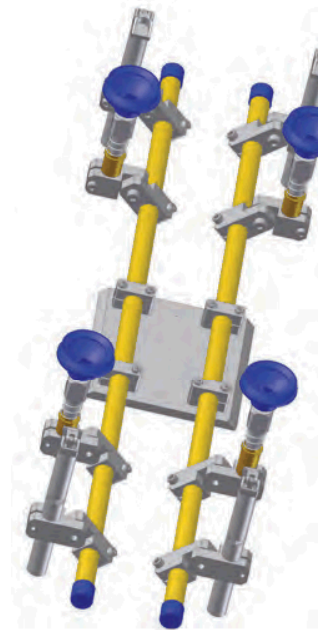
Note: Additional freight charges may apply due to dimensional weight surcharges from carriers.

T Profile... Tube Profile

T... Rundprofile
T...チューブ状プロファイル



- Highly adjustable, lightweight profile
- For use with SAS's uniquely designed single piece Mounting Clamps



14 mm
(.551")

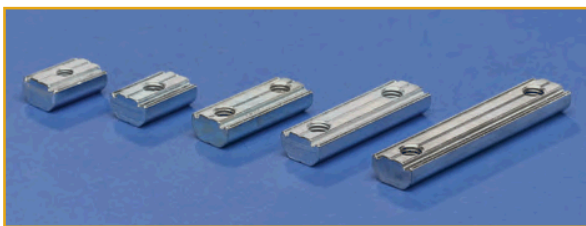
20 mm
(.788")

30 mm
(1.181")

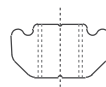
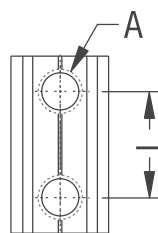
	OD	ID	Length	Weight (g)	Material	Price
T-14/11	14	11	1000	325	Aluminum	\$26.00
T-20/16	20	16	1000	625	Aluminum	\$26.00
T-20/10	20	10	2000	1280	Aluminum	\$32.00
T-30/25	30	25	2000	1170	Aluminum	\$60.00
T-30/20	30	20	2000	2120	Aluminum	\$75.00

GWP... Channel Nuts

GWP... Nutensteine
GWP...7/8インチ用ナット



- Used for replacements or for profile mounting of custom plates or brackets
- Available in 2m lengths of blank extrusion (non-plated) for custom applications
- Nuts can be easily dropped in the channel of JX Profile



GWP 5/45



Recommended Torque: (approx.)		
Fastener	Nm	FT.-lbs.
M4	3	2
M5	5.5	4
M6	9.5	7
M8	23	17

	Length	Profile	Material	Weight (g)	Price
PL-X	2000	L, X, D, JX, HX	Steel	810	\$11.00

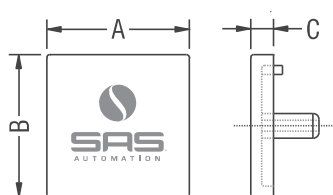
	A	L	Material	Weight (g)	Price
GWP 4	M4	~	Steel	6	\$1.10
GWP 4-8	M4	8	Steel	5	\$1.29
GWP 4-17	M4	17	Steel	9	\$1.29
GWP 4-31	M4	31	Steel	16	\$1.29
GWP 5	M5	~	Steel	5	\$1.42
GWP 5/45 *	M5	~	Steel	3	\$1.60
GWP 5-10	M5	10	Steel	7	\$1.70
GWP 5-12	M5	12	Steel	9	\$1.29
GWP 5-14	M5	14	Steel	9	\$1.29
GWP 5-16	M5	16	Steel	9	\$1.70
GWP 5-22	M5	22	Steel	12	\$1.62
GWP 5-25	M5	25	Steel	14	\$1.29
GWP 5-28	M5	28	Steel	15	\$1.70
GWP 5-38	M5	38	Steel	19	\$1.70
GWP 5-42	M5	42	Steel	21	\$1.70
GWP 5-58	M5	58	Steel	27	\$1.70
GWP 5-63	M5	63	Steel	30	\$1.70
GWP 6	M6	~	Steel	5	\$1.50
GWP 6-12	M6	12	Steel	9	\$1.80
GWP 6-15	M6	15	Steel	9	\$1.80
GWP 6-20	M6	20	Steel	11	\$1.80
GWP 6-25	M6	25	Steel	13	\$1.80
GWP 6-30	M6	30	Steel	15	\$1.80
GWP 6-40	M6	40	Steel	19	\$1.80
GWP 6-50	M6	50	Steel	23	\$1.80
GWP 6-52	M6	52	Steel	24	\$1.80
GWP 6-60	M6	60	Steel	28	\$1.80
GWP 6-92	M6	92	Steel	40	\$1.90

*Drop-in Channel Nut



ADK... Profile End Caps

ADK... Abdeckkappen
ADK...アルミフレーム用保護キャップ



	A	B	C	Color	Weight (g)	Price
ADK 18/10 L	18	10	4	Black/Yellow	1	\$0.89
ADK 18/18 L	18	18	4	Black/Yellow	2	\$0.89
ADK 25/25 X	25	25	4	Black/Yellow	2	\$0.89
ADK 50/25 X	50	25	4	Black/Yellow	3	\$1.49
ADK 50/38 D	50	38	2	Black/Yellow	9	\$1.95

*Above End Caps are black. To specify yellow End Caps, add "Y" After the profile size. (ex. ADK 18/10Y L)

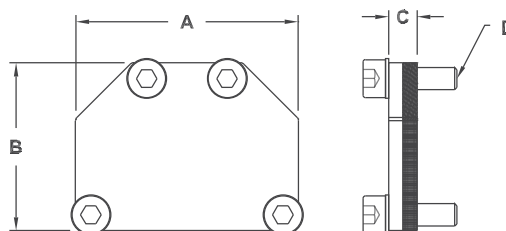
	A	B	C	Color	Weight (g)	Price
ADK 14Y T	ø 16	~	18	Yellow	2	\$0.89
ADK 20Y T	ø 22	~	18	Yellow	2	\$0.89
ADK 30Y T	ø 32	~	18	Yellow	5	\$0.89

ADK 40 HX	42	~	18	Yellow	7	\$1.80
ADK 40/40 JX	40	40	4	Black	5	\$1.49
ADK 40/40 Y JX	40	40	4	Yellow	9	\$1.49
ADK 60 HX	62	~	26	Yellow	14	\$2.20
ADK 80/40 JX	80	80	4	Black	9	\$1.49
ADK 80/40 Y JX	80	80	4	Yellow	9	\$1.49

- Dresses & protects profile ends
- Available in molded safety yellow or black colors

SEC... Sealed Profile End Caps

SEC... Abdichtende Abdeckkappen
SEC...アルミフレーム用保護キャップ

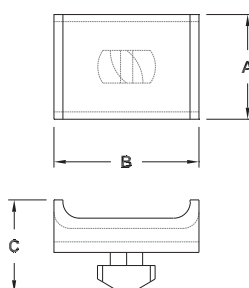


- Soft industrial rubber bonded to an aluminum backing plate
- Seals profile cavities to create internal air ducts
- For use with D and JX Profile

	A	B	C	D	Weight (g)	Price
SEC 50/38 D	50	38	6	M5	35	\$19.75
SEC 40/40 JX	40	40	6	M8	34	\$18.75
SEC 80/40 JX	80	40	6	M8	62	\$21.75

CTM... Cable and Hose Connection

CTM... Kabel- und Schlauchverbindung
CTM...ケーブルおよび:



- Convenient wiring and tubing tie-down twists tightly into standard frame profile
- Easily moveable and removeable
- CTM-15 designed to fit into L, X, & D profiles
- CTM-25 designed to fit into JX & HX profiles

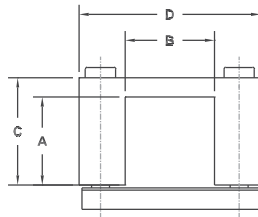
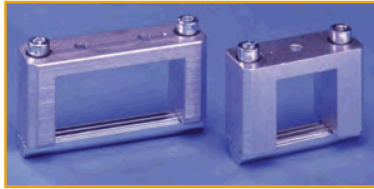
	A	B	C	Weight (g)	Price
CTM-15	12	15	16	11	\$14.00
CTM-25	18	25	16	21	\$16.00

Note: Sold in packs of 10.



KBV... Cross Joint Connector

KBV... Kreuzverbindung
KBV...クロスジョイントコネクター

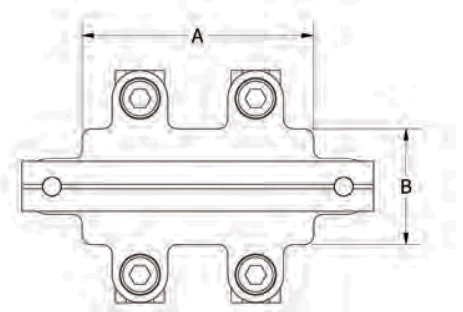
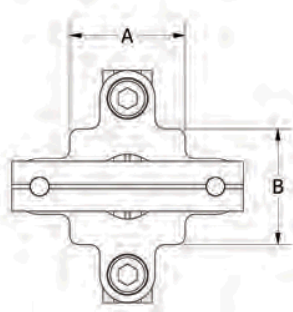


- Bridge style clamp for frame profile cross mounting
- Allows full adjustability in two dimensions simultaneously

	A	B	C	D	Profile	Weight (g)	Price
KBV 10-18 L	10	18	16	40	L-18/10 to L/X	40	\$15.20
KBV 18-18 L	18	18	25	40	L-18/18 to L/X	52	\$16.20
KBV 25-25 X	25	25	30	51	X-25/25 to X/D/HX	74	\$16.75
KBV 25-50 X	25	50	30	76	X-50/25 to X/D/HX	92	\$18.00
KBV 50-25 X	50	25	60	51	X-50/25 to X/D/HX	119	\$18.50
KBV 40-40 JX	40	40	56	66	JX-40/40 to X/JX/D/HX	161	\$20.25
KBV 40-80 JX	40	80	56	106	JX-80/40 to X/JX/D/HX	209	\$22.25
KBV 80-40 JX	80	40	97	76	JX-80/40 to X/JX/D/HX	298	\$22.75

KPL... Cross Joint Connector

KPL... Kreuzplatte
KPL...クロスジョイントコネクター

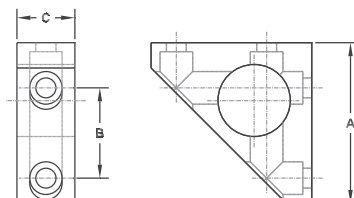


- Sandwich style bracket used for profile cross mounting
- Allows for full adjustability in 2 dimensions individually or simultaneously

	A	B	Profile	Weight (g)	Price
KPL 18-18 L	18	18	L to L-18/18	52	\$20.30
KPL 25-25 X	25	25	X to X	68	\$23.25
KPL 25-50 X	50	25	X-50/25 to X	118	\$25.75
KPL 50-50 X	50	50	X-50/25 to X-50/25	189	\$28.75
KPL 40-40 JX	40	40	JX to JX	143	\$25.75
KPL 80-40 JX	80	40	JX-80/40 to JX	~	\$29.60
KPL 80-80 JX	80	80	JX-80/40 to JX-80/40	281	\$29.25

WIV... Angle Joint Connector

WIV... Winkelverbinder
WIV...アングルジョイントコネクター

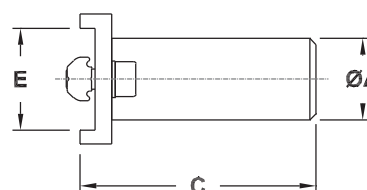
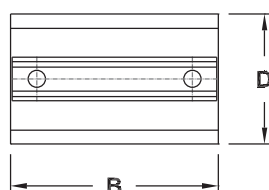


- Corner bracket for squareness and stability
- Fits in corner of 2 joining frame profiles and does not interfere with parts in other channels

	A	B	C	Profile	Weight (g)	Price
WIV 25 X	25	~	16	X/D	28	\$9.95
WIV 50 X	51	20	16	X/D	72	\$16.88
WIV 40 JX	38	~	25	JX	65	\$10.25
WIV 80 JX	76	40	25	JX	213	\$26.85



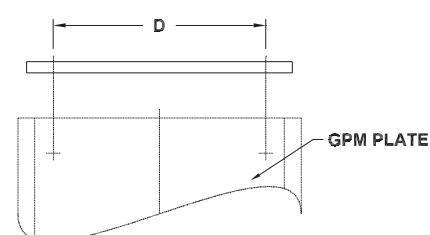
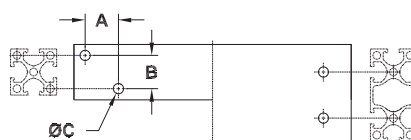
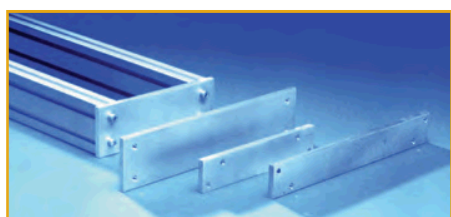
DKA... Profile Extension Arm

DKA... Einstellbarer Profilverbindungsarm
DKA... プロファイル延長アーム

- Offsets profile connections using clamps
- Allows for clearance between profile

	A	B	C	D	E	Weight (g)	Price
DKA 10 L	10	38	94	22	18	32	\$20.00
DKA 14 X	14	51	128	32	25	68	\$24.75
DKA 20 X	20	51	158	32	25	99	\$21.75

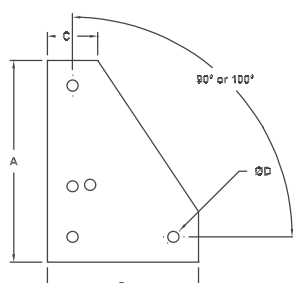
EPL... End Plate

EPL... Endplate
EPL... エンドプレート

- Connects frame profile ends for added stability and strength

	A	B	C	D	Mounting Plate	Profile	Weight (g)	Price
EPL 2-25 X	18	18	5.5	120	GPM 2 X/ GPM 2 SA /GPG 2	X-25/25	95	\$5.57
EPL 2-50 X	~	25	5.5	120	GPM 2 X/ GPM 2 SA /GPG 2	X-50/25	156	\$11.64
EPL 3-25 X	18	18	5.5	200	GPM 2 X/ GPM 2 SA /GPG 2	X-25/25	15	\$6.19
EPL 3-50 X	~	25	5.5	200	GPM 3 X/ GPM 3 SA /GPG 3	X-50/25	218	\$7.75
EPL 3-40 JX	~	~	8.5	200	GPM 3 X	JX-40/40	218	\$9.20
EPL 3-80 JX	~	40	8.5	200	GPM 3 X	JX-80/40	445	\$11.83

EVB... Corner Joint Plate

EVB... Eckverbinder
EVB... コーナージョイントプレート

- Corner plate bracket for squareness and stability
- Joins two profiles at either a 90° or 100° fixed angle
- Forms a rigid connection

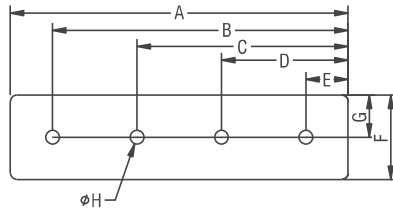
	A	B	C	D	Profile	Weight (g)	Price
EVB 25 X	100	75	25	5.5	X-25	147	\$15.50
EVB 50 X	100	100	50	5.5	X-50	212	\$17.75
EVB 40 JX	100	100	40	6.5	JX-40	201	\$17.75

FRAME CONNECTORS



EVG... Straight Connector Plate

EVG... Eckverbinder (Gerade)
EVG... コネクター

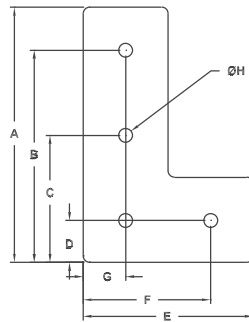


- Profile is connected end to end
- Can be used to brace L connectors on wide profile
- Forms a rigid connection

	A	B	C	D	E	F	G	H	Weight (g)	Price
EVG 25/50 X	50	~	~	38	13	25	13	5.5	44	\$9.85
EVG 25/75 X	75	~	63	38	13	25	13	5.5	62	\$11.75
EVG 25/100 X	100	88	63	38	13	25	13	5.5	88	\$12.50
EVG 40/160 JX	160	140	100	60	20	40	20	6.5	186	\$18.45

EVL... Connector Plate

EVL... Eckverbinder (L-Form)
EVL... L形コネクター

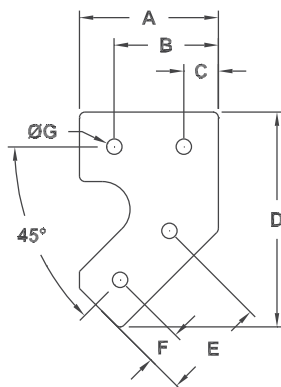


- Profile is connected perpendicular
- Forms a rigid connection

	A	B	C	D	E	F	G	H	Weight (g)	Price
EVL 50/50 X	50	~	38	13	50	38	13	5.5	90	\$10.95
EVL 50/75 X	75	63	38	13	50	38	13	5.5	87	\$13.90
EVL 80/120 JX	120	100	60	20	80	60	20	6.5	182	\$17.07

EVW 45... 45 Degree Connector Plate

EVW... Eckverbinder (45 Grad)
EVW... 45度コネクター



- Joins two profiles at a 45° angle
- Forms a rigid connection



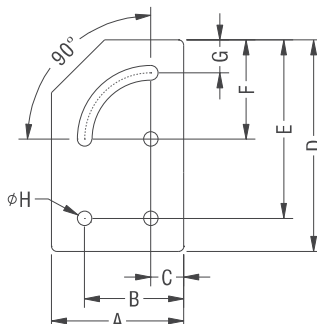
	A	B	C	D	E	F	G	Weight (g)	Price
EVW 45 X	50	38	13	77	38	13	5.5	95	\$16.45
EVW 45 JX	80	60	20	118	53	13	6.5	188	\$18.50

*SAS Automation will match any competitor's price for stock components with proper verification.



EVW 0-90... 0-90 Degree Connector Plate

EVW... Eckverbinder (0-90 Grad verstellbar)
EVW... 角度調整コネクター(0~90度)

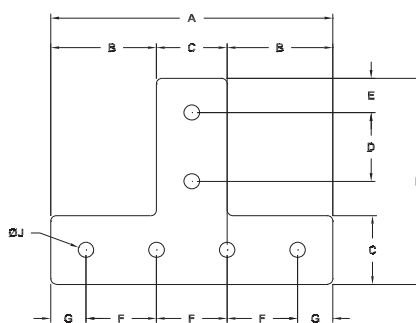
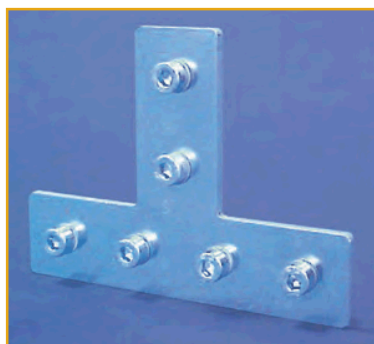


- Joins two profiles at any angle between 0 and 90°
- Angle of profile intersection can be adjusted at any time
- Forms a rigid connection

	A	B	C	D	E	F	G	H	Weight (g)	Price
EVW 0-90 X	50	38	13	80	68	38	13	5.5	109	\$16.45
EVW 0-90 JX	80	60	20	130	110	60	20	6.5	255	\$18.50

EVT... T Connector Plate

EVT... Eckverbinder (T-Form)
EVT... T形コネクター

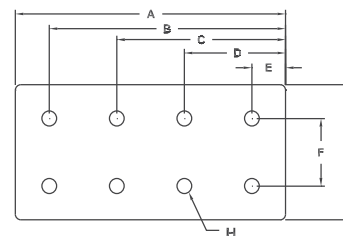
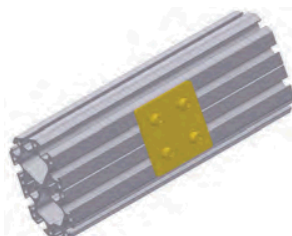


- Profile is connected perpendicular
- Forms a rigid connection

	A	B	C	D	E	F x (#Holes)	G	H	J	Weight (g)	Price
EVT 50/75 X	50	13	25	25 X 2	13	25 X 2	13	75	5.5	88	\$13.90
EVT 100/75 X	100	38	25	25 X 2	13	25 X 4	13	75	5.5	135	\$19.30
EVT 100/80 D	100	38	25	25 X 2	10	25 X 4	13	80	5.5	135	\$19.50
EVT 100/130 D	100	38	25	25 X 3	10	25 X 4	13	130	5.5	178	\$20.50
EVT 120/120 JX	120	40	40	40	20	40 X 3	20	120	6.5	219	\$21.25

EVD... Straight Connector Plate

EVD... Eckverbinder Doppelt (Gerade)
EVD... ストレート・コネクター・プレート

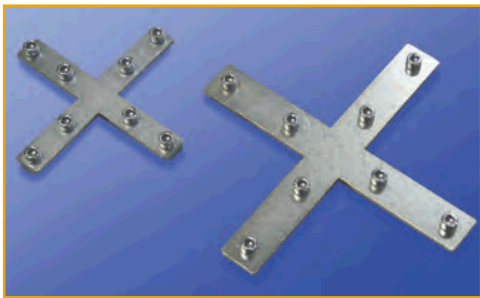


- Straight plates for side-by-side and end-to-end connections of profile
- Forms a rigid connection

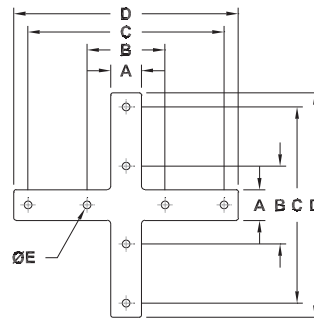
	A	B	C	D	E	F	G	H	Weight (g)	Price
EVD 50/50 X	50	37.5	12.5	~	~	25	50	5.5	88	\$17.00
EVD 50/100 X	100	87.5	62.5	37.5	12.5	25	50	5.5	178	\$22.75

EVC... Cross Connector

EVC... Kreuzverbinder
EVC... クロスコネクタ



- Profile is connected perpendicular
- Forms a rigid connection
- For use with HX profile



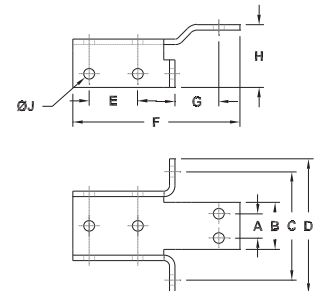
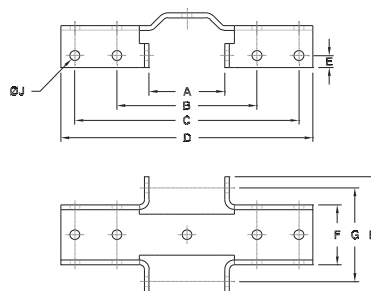
	A	B	C	D	ØE	Weight (g)	Price
EVC 40/40	18	56	116	130	6.5	205	\$14.34
EVC 60/60	26	66	166	190	6.5	365	\$15.27

EVH... Cross Connector

EVH... Kreuzverbinder
EVH... クロスコネクタ



- Profile is connected perpendicular
- Forms a rigid connection
- For use with HX profile



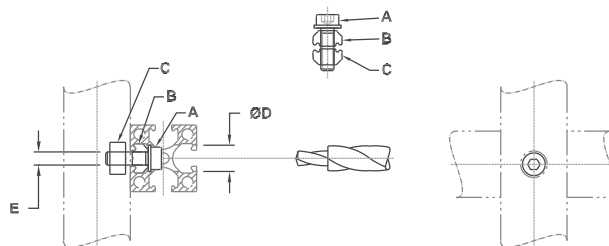
	A	B	C	D	E	F	G	H	ØJ	Weight (g)	Price
EVH 60/40-1	15	29	66.8	82.8	30	103	27.2	38.9	6.6	301	\$28.14
EVH 60/40-2	54	100	160	180	8.6	42.8	66.8	82.8	7	561	\$50.10



KV... Cross Connector

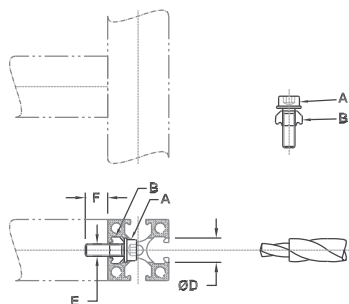
KV... Kreuzverbinder
KV...クロスコネクター

- Low cost stable cross connector for joining two similar profiles
- Will not interfere with components on either profile
- Includes cap screw, serrated lock washer, channel nut with through hole
- Drilling of one profile is required with our STB step drill



	A	B	C	D	E	Profile	Weight (g)	Price
KV-L	M4	ULP 4X	GWP 4	8	M4	L	16	\$5.43
KV-X	M5	ULP 5X	GWP 5	Ø10 (STB M5)	M5	X	14	\$4.68
KV-JX	M6	ULP 6X	GWP 6	15	M6	JX	15	\$3.25

SV... Butt Connector

SV... Stoßverbindung
SV...突合せコネクター

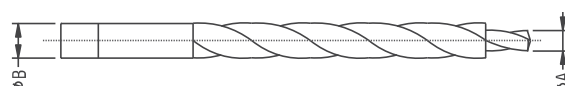
- Low cost stable perpendicular end-butt connector for joining two profiles
- Will not interfere with components on either profile
- Includes cap screw, serrated lock washer, and channel nut with through hole
- Drilling of one profile required using our STB step drill and tapping the end of the profile

	A	B	D	E	Profile	Weight (g)	Price
SV-X	M5 SHCS	ULP 5X	Ø10 (STB M5)	M5	X	9	\$1.85

STB... Step Drill

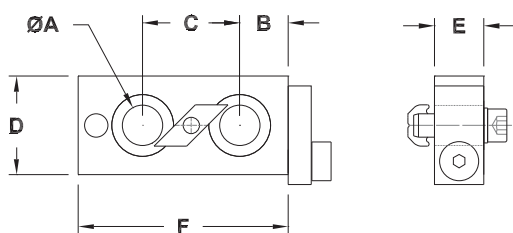
STB... Stufenbohrer
STB...ドリル替刃

- Used for step drilling of aluminum profiles
- One drill setup for installing KV or SV connectors



	A (Drill)	B (C'Bore)	Profile	Weight (g)	Price
STB M5	5.5	10	X	47	\$38.07
STB M6	6.5	11	JX	~	\$54.40

PJ... Profile Jigs

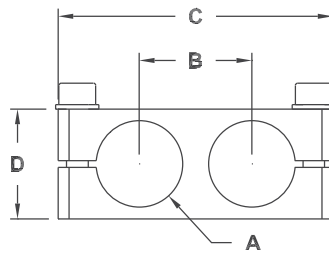
PJ... Spannvorrichtung
PJ... プロファイル・ジグ

- Easily locate holes for SV & KV profile connectors
- Eliminates drill "walking" to assure square connections

	A	B	C	D	E	F	Profile	Weight (g)	Price
PJ-X	10	12.5	25	25	13	54	X	75	\$39.00
PJ-JX	11	20	40	32	13	80	JX	144	\$44.00

KPC... Tube Parallel Clamp

KPC... Parallelrohrklemme
KPC... チューブ状十字ジョイント・コネクター

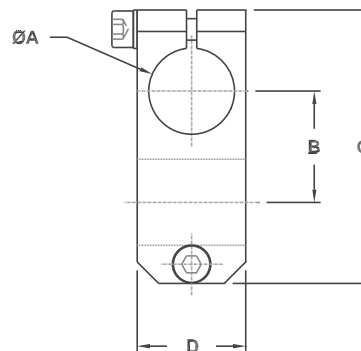


- Parallel profile clamp for new Tube (T) profile
- One piece construction for easy assembly

	A	B	C	D	Weight (g)	Price
KPC 10	10	14	38	16	14	\$17.00
KPC 14	14	20	52	19	35	\$18.00
KPC 20	20	26	64	25	48	\$19.00
KPC 30	30	39	90	38	~	\$21.00

KNC... Tube Cross Clamp

KNC... Verbinder für Rundrohr
KNC... チューブ状十字ジョイント・コネクター



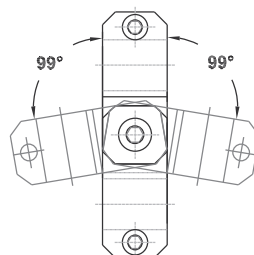
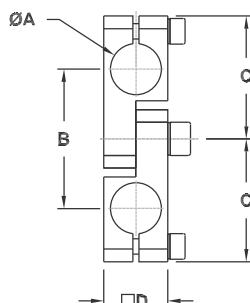
- Adjustable angle cross connection of new Tube(T) profile
- One piece construction for easy assembly



	A	B	C	D	Weight (g)	Price
KNC 10	10	14	38	16	~	\$18.00
KNC 14	14	20	52	19	40	\$19.50
KNC 20	20	26	64	25	70	\$21.00
KNC 30	30	39	90	38	215	\$23.00

KAC... Tube Angle Swivel Clamp

KAC... Verbinder für Rundrohr
KAC... チューブ状十字ジョイント・コネクター

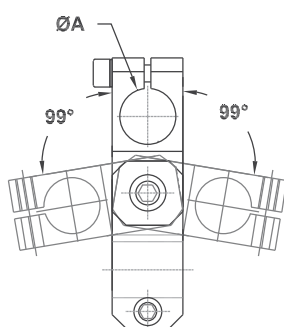
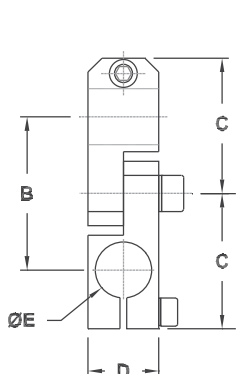


- Adjustable angle cross connection for new Tube (T) profile
- One piece construction for easy assembly

	A	B	C	D	Weight (g)	Price
KAC 14-14	14	55	48	25	153	\$18.00
KAC 20-20	20	55	48	25	131	\$21.00
KAC 30-30	30	77	64	38	342	\$29.09



KEC... Tube Cross Swivel Clamp

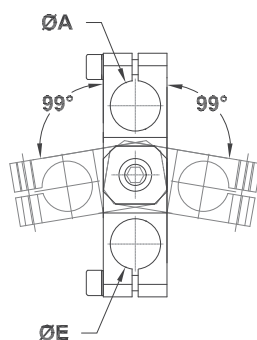
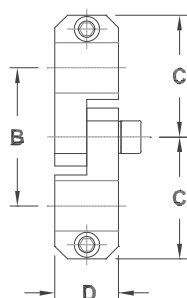


KEC... Rohrklemme gekreuzt schwenkbar
KEC... チューブ状調節可能アングル十字ジョイント・コネクター

- Swivel cross connection for new Tube (T) profile
- One piece construction for easy assembly

	A	B	C	D	E	Weight (g)	Price
KEC 14-14	14	55	48	25	14	155	\$18.00
KEC 14-20	14	55	48	25	20	146	\$20.00
KEC 20-20	20	55	48	25	20	132	\$29.87
KEC 20-30	20	77	64	38	30	~	\$40.27
KEC 30-30	30	77	64	38	30	~	\$30.45

KIC... Tube Parallel Swivel Clamp



KIC... Rohrklemme parallel schwenkbar
KIC... チューブ状調節可能アングル十字ジョイント・コネクター

- Parallel connector for new Tube (T) profile
- One piece construction for easy assembly

	A	B	C	D	E	Weight (g)	Price
KIC 14-14	14	55	48	25	14	155	\$18.00
KIC 14-20	14	55	48	25	20	144	\$20.00
KIC 20-20	20	55	48	25	20	131	\$25.00
KIC 20-30	20	77	64	38	30	370	\$35.31
KIC 30-30	30	77	64	38	30	327	\$28.00