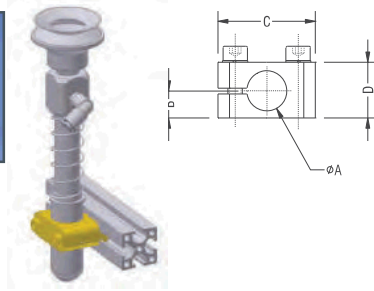


KVB... Cross Clamp

KVB... Kreuzverbinder
KVB... クロスクランプ



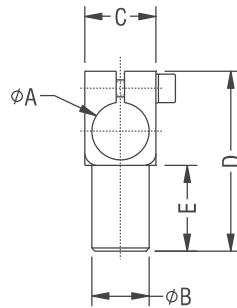
- Allows for side mounting of gripper arms to frame profiles
- Allows for mounting of new Tube (T) profiles to standard frame profiles



	A	B	C	D	Recommended Profile	Weight (g)	Price
KVB 10	10	8	25	16	L/X/D/HX	21	\$10.00
KVB 14	14	10	34	19	L/X/JX/D/HX	36	\$14.75
KVB 20	20	18	40	25	X/JX/D/HX	51	\$14.50
KVB 30	30	18	50.8	38	X/JX/D/HX	94	\$18.50

SKS... Insert Clamp

SKS... Steckklemmstück
SKS... インサートクランプ



- Supplies 90° mounting with rotation
- Short shaft clamp

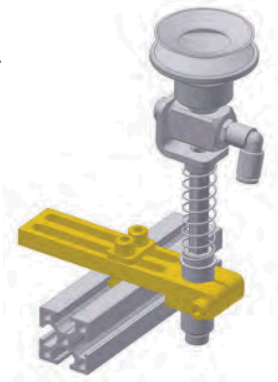
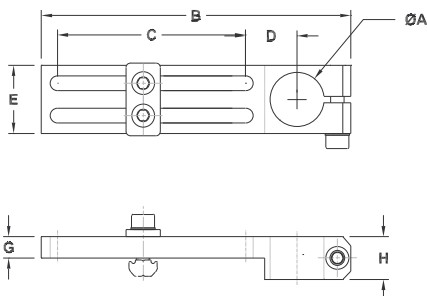
	A	B	C	D	E	Weight (g)	Price
SKS 20	20	20	25	63	30	54	\$22.75
SKS 20-30	30	20	38	78	34	81	\$27.50

WSL... Long Angle Clamp

WSL... Winkelklemmstück
WSL... ロングアングルクランプ



- Allows for top mounting of gripper arms and holders to frame profile
- Adjustable parallel and perpendicular to the frame
- Nylon-titanium composite clamps are less expensive and lighter weight
- Aluminum clamps are more rigid for instances where precise locating is needed such as GRF gripper fingers and ASZ cutters
- Hex head screws available upon request



Nylon Titanium	A	B	C	D	E	G	H	Profile	Weight (g)	Price
WSL 10 NT	10	82	45	16	18	10	10	L/X/JX/HX/D	28	\$13.95
WSL 14 NT	14	100	57	21	27	10	13	L/X/JX/HX/D	54	\$17.10
WSL 20 NT	20	119	66	24	27	12	16	X/JX/HX/D	67	\$17.55
WSL 30 NT	30	132	66	30	39	15	19	X/JX/HX/D	112	\$19.35
WSL 20 JX NT	20	135	70	34	32	16	16	X/JX/HX/D	99	\$19.35
WSL 30 JX NT	30	141	60	39	45	19	19	X/JX/HX/D	170	\$20.92

Aluminum	A	B	C	D	E	G	H	Profile	Weight (g)	Price
WSL 10 AL	10	80	47	14	16	6	10	L/X/JX/HX/D	29	\$15.50
WSL 14 AL	14	100	62	16	22	8	13	L/X/JX/HX/D	55	\$19.00
WSL 20 AL	20	115	70	19	25	8	16	X/JX/HX/D	74	\$19.50
WSL 30 AL	30	129	67	28	38	10	19	X/JX/HX/D	150	\$21.50
WSL 20 JX AL	20	132	74	30	32	16	16	X/JX/HX/D	150	\$21.50
WSL 30 JX AL	30	137	64	35	45	19	19	X/JX/HX/D	281	\$23.25

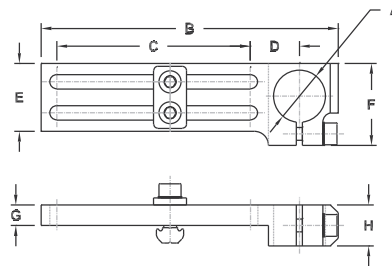
*SAS Automation will match any competitor's price for stock components with proper verification.



WSL...T Top Long Angle Clamp



- Allows for top mounting of gripper arms or holders to frame profile
- Adjustable parallel and perpendicular to the frame
- Screw head points out from profile so clamps can be mounted close together
- Allows for close mounting of clamps.



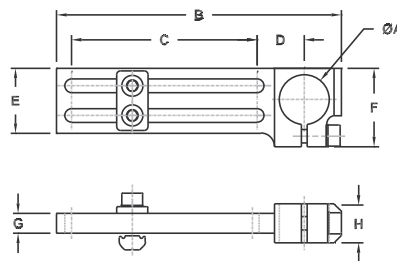
WSL...T Winkelklemmstück (mit Kopfschraube)
WSL...T トップ・ロング・アングル・クランプ

Aluminum	A	B	C	D	E	F	G	H	Profile	Weight (g)	Price
WSL 10 T	10	80	47	14	17	22	6	10	L/X/JX/HX/D	30	\$16.50
WSL 14 T	14	100	64	16	20	25	8	13	L/X/JX/HX/D	49	\$20.00
WSL 20 T	20	115	75	19	26	32	8	16	X/JX/HX/D	76	\$20.50
WSL 30 T	30	130	77	28	37	45	10	19	X/JX/HX/D	~	\$21.69

WSL...TR Top Reversible Long Angle Clamp



- Allows for top mounting of gripper arms or holders to frame profile
- Adjustable parallel and perpendicular to the frame
- Allows for close mounting of clamps.
- Flexible mounting allows an adjustment range of 180.



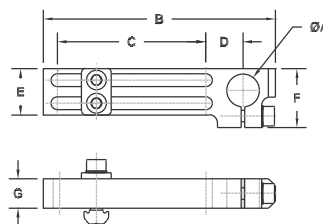
WSL...TR Drehbares Winkelklemmstück (mit Kopfschraube)
WSL...TR トップ可逆ロング・アングル・クランプ

Aluminum	A	B	C	D	E	F	G	H	Profile	Weight (g)	Price
WSL 10 TR	10	80	42	20	17	22	6	10	L/X/JX/HX/D	30	\$17.00
WSL 14 TR	14	100	60	20	20	25	7	13	L/X/JX/HX/D	47	\$20.50
WSL 20 TR	20	115	73	21	26	32	8	16	X/JX/HX/D	76	\$20.50
WSL 30 TR	30	130	74	31	37	45	10	19	X/JX/HX/D	137	\$24.00

WSL...TRB Long Angle Clamp



- Allows for top or bottom mounting of gripper arms or holders to frame profile
- Adjustable parallel and perpendicular to the frame
- Thick aluminum clamps are more rigid for use with extremely heavy parts and MR cutters
- Allows for close mounting of clamps.



WSL...TRB Drehbares Winkelklemmstück (mit Kopfschraube)
WSL...TRB トップ可逆ロング・アングル・クランプ

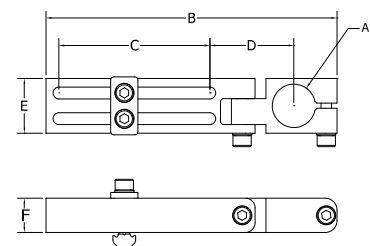
Aluminum	A	B	C	D	E	F	G	Profile	Weight (g)	Price
WSL 10 TRB	10	80	47	14	17	22	10	L/X/JX/HX/D	35	\$16.50
WSL 14 TRB	14	100	64	16	20	25	13	L/X/JX/HX/D	59	\$20.00
WSL 20 TRB	20	115	75	19	26	32	16	X/JX/HX/D	110	\$20.50
WSL 30 TRB	30	130	77	28	37	45	19	X/JX/HX/D	205	\$23.87

WSL...SH Angle Clamp



- Allows for top mounting of gripper arms and holders to frame profile
- Adjustable parallel and perpendicular to the frame
- Clamps offers a swivel mounting

Aluminum	A	B	C	D	E	F	Weight (g)	Price
WSL SH 10	10	90	45	26	16	10	39	\$31.50
WSL SH 14	14	114	60	31.5	23	13	80	\$34.20
WSL SH 20	20	135	70	39	26	16	123	\$36.45
WSL SH 30	30	153	70	49	39	19	250	\$38.70

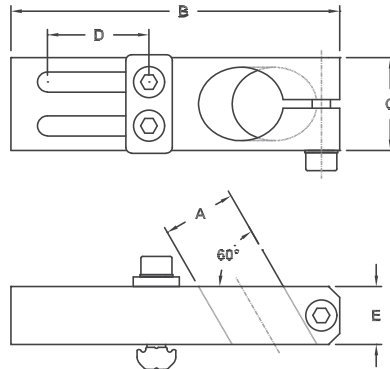




WSA... Long Angle Clamp

WSA... Winkelklemmstück 30°

WSA... ロング・アングル・クランプ



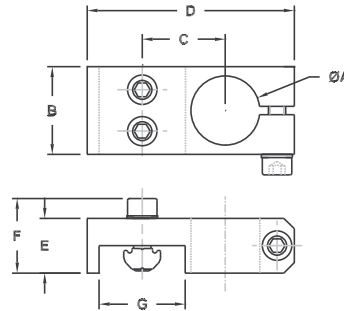
- Mounts components and extension arms at a 30° angle to profile surface
- Adjustable parallel and perpendicular to frame profile

Aluminum	A	B	C	D	E	Profile	Weight (g)	Price
WSA 10	10	65	16	19	10	X/JX/HX/D	34	\$21.50
WSA 14	14	80	25	25	10	X/JX/HX/D	94	\$21.50
WSA 20	20	90	25	30	16	X/JX/HX/D	94	\$22.50
WSA 30	30	113	38	40	19	X/JX/HX/D	198	\$24.50

WST... Angle Clamp

WST... Winkelklemmstück

WST...アングルクランプ



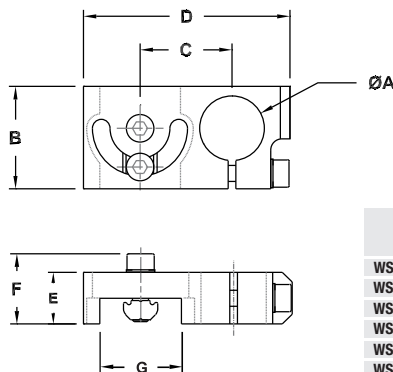
- Allows for top mounting of gripper arms or holders to frame profile
- Adjustable along the channel of the frame profile
- Hex head screws available upon request

	A	B	C	D	E	F	G	Profile	Weight (g)	Price
WST 10 L	10	16	16	40	10	14	18	L	21	\$10.50
WST 10 X	10	16	20	47	10	14	25	X	22	\$10.63
WST 14 X	14	25	21	52	13	19	25	X	41	\$13.25
WST 20 X	20	25	24	60	16	22	25	X	56	\$13.75
WST 30 X	30	38	30	73	19	25	25	X	104	\$16.75
WST 20 JX	20	32	34	77	16	23	40	JX	88	\$16.75
WST 30 JX	30	45	39	92	19	26	40	JX	126	\$19.25

WST...TR Reversible Top Angle Clamp

WST...TR Winkelklemmstück verstellbar

WST...TR 可逆トップ・アングル・クランプ



- Allows for top mounting of gripper arms or holders to frame profile
- Adjustable along the channel of the frame profile
- Allows for close mounting of clamps
- Reverse mounting offers 180° adjustability

	A	B	C	D	E	F	G	Profile	Weight (g)	Price
WST 10 L-TR	10	22	20	41	10	19	18	L	23	\$11.61
WST 10 X-TR	10	22	24	48	10	19	25	X	28	\$17.50
WST 14 X-TR	14	25	25	52	16	25	25	X	40	\$13.25
WST 20 X-TR	20	32	28	57	16	25	25	X	58	\$13.75
WST 30 X-TR	30	45	39	68	19	28	25	X	119	\$16.75
WST 20 JX-TR	20	32	35	80	16	20	40	JX	98	\$16.75
WST 30 JX-TR	30	45	39	85	19	28	40	JX	126	\$19.25

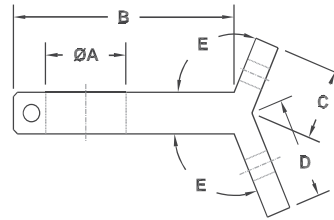


WSY... Y-Angle Clamp

WSY... Y-Klemmstück
WSY... アングル・クランプ



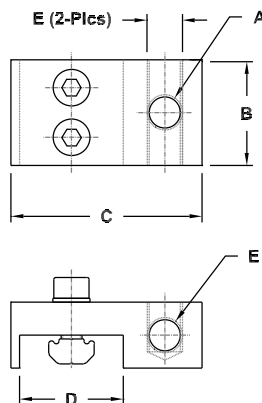
- Allows for sturdy offset mounting of extension arms and components to D profile
- Adjustable along the channel of the frame profile



Aluminum	A	B	C	D	E	Profile	Weight (g)	Price
WSY 20 D	20	55	17	25	113	D	126	\$22.50

WSS... Angle Connector

WSS Winkelstück
WSS...アングル コネクタ

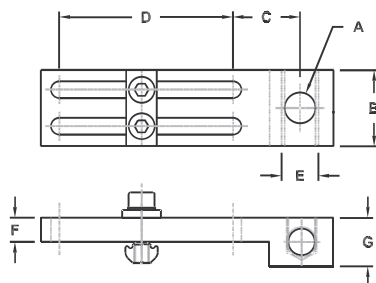


- Allows for low profile height by mounting vacuum cups directly to the frame profile
- Adjustable along the channel of the frame profile
- Extra port can connect vacuum to another cup

	A	B	C	D	E	Profile	Weight (g)	Price
WSS M5 L	M5	16	32	18	M5	L	18	\$12.00
WSS 1/8 X	G 1/8"	25	46	25	G 1/8"	X	47	\$14.75
WSS 1/4 X	G 1/4"	25	46	25	G 1/8"	X	47	\$15.50

WLS... Long Angle Connector

WLS... Winkelstück (lang)
WLS...ロングアングルコネクタ



- Allows for low profile height by mounting vacuum cups directly to the frame profile
- Adjustable parallel and perpendicular to the frame profile
- Extra port can connect vacuum to another cup

	A	B	C	D	E	F	G	Profile	Weight (g)	Price
WLS M5	M5	16	16	45	M5	6	13	L/X	13	\$13.00
WLS 1/8	G 1/8"	25	23	57	G 1/8"	8	16	L/X/HX/D	~	\$18.25
WLS 1/4	G 1/4"	25	23	57	G 1/8"	8	16	L/X/JX/HX/D	~	\$18.25

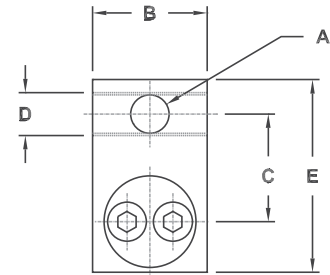


WSD... Adjustable Angle Connector

WSD... Winkelstück 360° drehbar
WSD... 角度調整アングルコネクター



- Allows for low profile height by mounting vacuum cups directly to the frame profile
- Adjustable along the frame profile and at any rotational angle



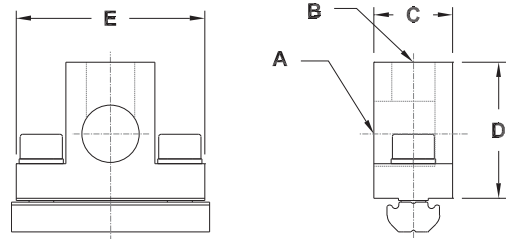
	A	B	C	D	E	Angle	Profile	Weight (g)	Price
WSD M5	M5	16	16	M5	32	360	L/X	21	\$14.90
WSD 1/8	G 1/8"	25	23	G 1/8"	46	360	L/X/JX/HX/D	60	\$18.75
WSD 1/4	G 1/4"	25	23	G 1/8"	46	360	L/X/JX/HX/D	59	\$24.71

SAS... Vacuum Cup Connector

SAS... Saugeranschluss (seitlich)
SAS... 吸着パッドコネクター



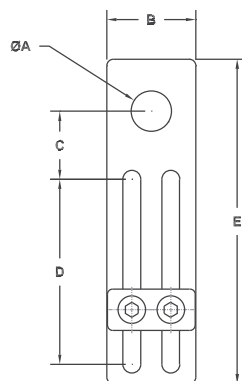
- Provides minimum profile height, allowing vacuum cups to be mounted to the side of the frame profile
- Adjustable along the channel of the frame profile



	A	B	C	D	E	Profile	Weight (g)	Price
SAS 1/8	G 1/8"	G 1/8"	16	25	38	L/X/D	43	\$10.75
SAS 1/4	G 1/4"	G 1/8"	16	25	38	X/JX/HX/D	42	\$10.75

WSF... Long Angle Plate

WSF... Befestigungsplatte (lang)
WSF... 長い角度版



- Mounts Grip-It! Vacuum Cup Holders to our standard frame profile

	A	B	C	D	E	Profile	Weight (g)	Price
WSF 10.5	11	27	21	57	100	L/X/JX/HX/D	37	\$12.50
WSF 12.5	13	27	21	57	100	L/X/JX/HX/D	37	\$16.63
WSF 16.5	17	27	21	57	100	L/X/JX/HX/D	35	\$16.16